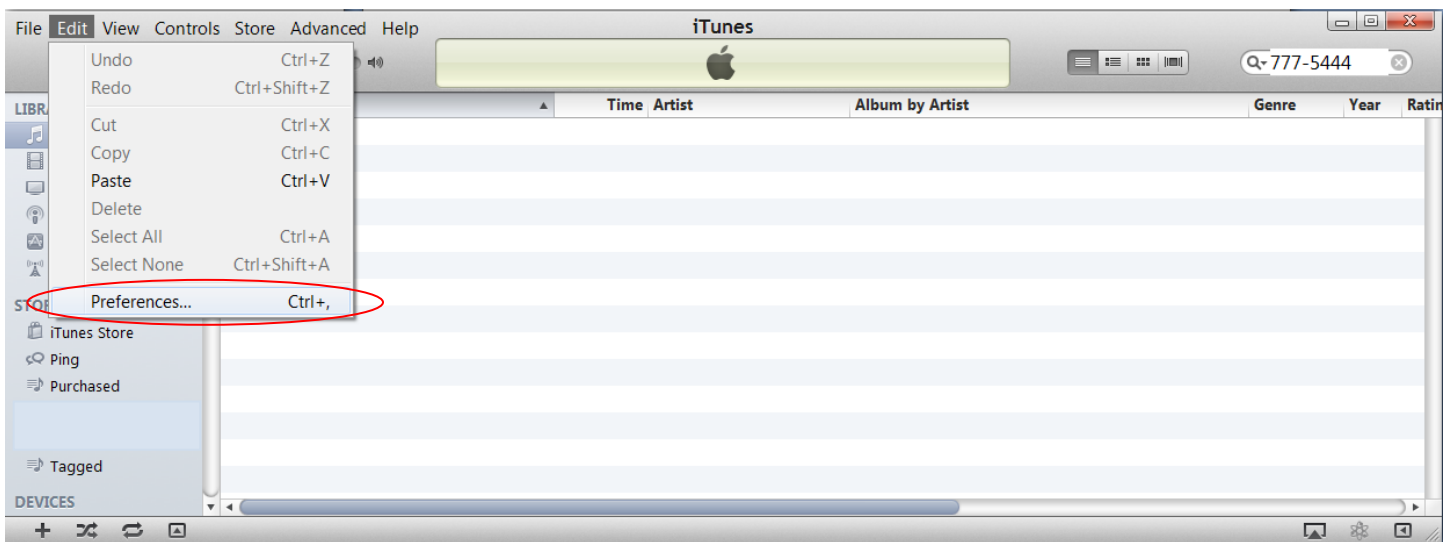


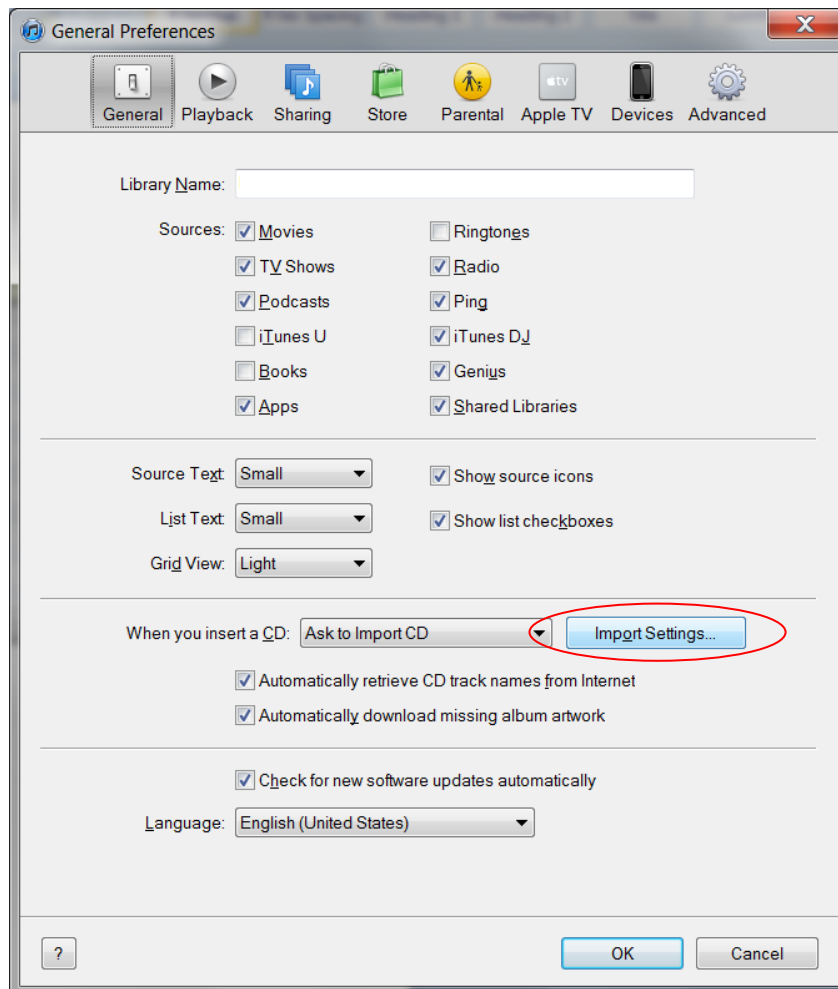
## Instructions for Setting “Apple Lossless” Importing in iTunes

---

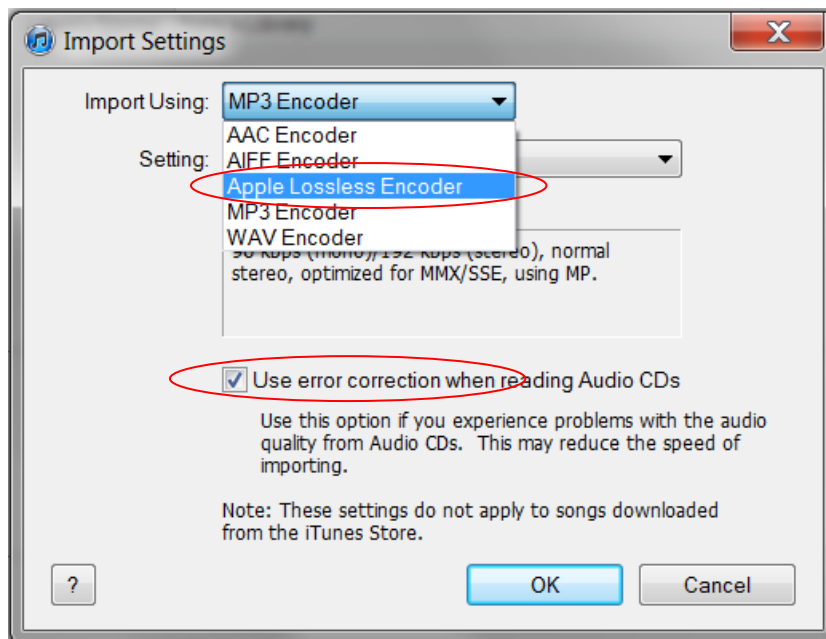
1. Open the iTunes program on your computer.
2. Select **PREFERENCES** from the drop down menus in iTunes



3. On the **GENERAL** tab, click the **IMPORT SETTINGS** button



4. In the **IMPORT USING** drop down box, select **Apple Lossless Encoder**
5. Check the **Use error correction when reading Audio CDs** checkbox.



6. Click **OK** twice to save your new settings.